

FREENAS MINI | STORAGE APPLIANCE

IT SAVES YOUR LIFE.



HOW IMPORTANT IS YOUR DATA?

Years of family photos. Your entire music and movie collection. The shared documents in your office. Your schoolwork. Backups for every machine in your home or office. We ask again, just how important is your data?

At iXsystems we think the answer is clear. In the modern age, data is an essential part of our lives. We have used this assertion as the guiding design principle for all of our products, and the Mini is certainly no different.

The FreeNAS Mini has surfaced as the clear choice when it comes to saving your digital life. No other NAS in its class offers ECC (error correcting code) memory to protect your data from corruption before it touches a disk, as well as ZFS to preserve against silent decay over time. No other NAS combines the inherent data integrity and security of the ZFS filesystem with fast on-disk encryption. No other NAS provides comparable power and flexibility. When it comes to saving your important data, you simply can't afford another solution.



*CORRUPTED PICTURE



ORIGINAL PICTURE

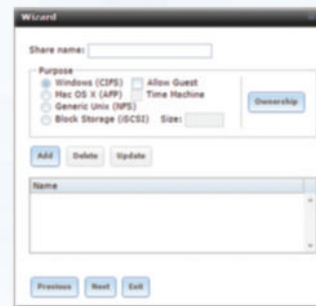
*Simulation of a single-bit change to a JPG file.



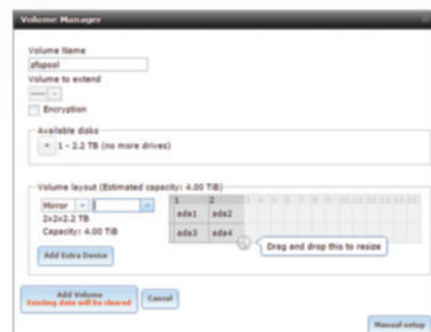
Call or click today! **1-855-GREP-4-IX** (US) | **1-408-943-4100** (Non-US) | www.iXsystems.com/mini or purchase on Amazon.

Power Management	Remote Power-On/Off, UPS Signal Response and Alerts
Disk Management	Hot-Swappable Drives, Bad Block Scan + HDD S.M.A.R.T., ISO Mounting Support, Hardware-Accelerated Disk Encryption
Chassis	4 Bay Enclosure - Super Quiet Design
Maximum Capacity	Up to 24TB depending on RAID layout
CPU	8-Core 2.4GHz Intel CPU with AES-NI
Memory	16GB DDR3 with ECC standard, 32GB upgrade optional
RAID Levels	RAID-Z1 (RAID 5), RAID-Z2 (RAID 6), ZFS Mirror (RAID 10), ZFS Stripe
RAID Engine	ZFS
Network	2 x 10/100/1000 Gigabit Ethernet Port, Dual-Port 10Gb upgrade optional, Dedicated RJ-45 IPMI Port (Remote Hardware Management)
Hard Drive Bays	4 x SATA 3.5" Hot-Swappable Drive Bays 2 x SATA 2.5" Internal Drive Bays
Read/Write Cache	Read Cache - L2ARC (Optional) Boost performance by adding a dedicated, high-performance read cache. Write Cache - ZIL (Optional) Boost performance by adding a dedicated, high-performance write cache.
Power Supply	100V to 240V AC
Power Frequency	50/60 HZ, Single Phase
Power Consumption	37-47 Watts
User Control Interface	Web Browser and Remote Hardware Management
Dimension (in.)	9.45" W x 8.27" D x 9.45" H
Weight (lb)	10.8lb (without drives)
Limited Warranty	1 Year
Package Contents	FreeNAS Mini (1), Power Cord (1), Quick Start Guide (1), Case Door Key (2), Removable Disk Tray (4), Goodies! (?)

FreeNAS Setup Wizard



ZFS Volume Setup



SOFTWARE FEATURES & SERVICES

FILE AND BLOCK PROTOCOLS

- CIFS/SMB
- NFS v3, v4
- AFP
- (S)FTP
- iSCSI
- WebDAV

DIRECTORY SERVICES

- Active Directory (AD)
- Lightweight Directory Access Protocol (LDAP)
- Network Information Service (NIS)

NETWORKING

- NIC Failover
- Port Trunking/NIC Teaming (Modes: Balance - rr, Active Backup, Balance xor, Broadcast, IEEE 802.3ad Link Aggregation)
- VLAN Support
- DHCP client, DHCP Server

SUPPORTED BROWSERS

- Internet Explorer 7.x and later
- Firefox 3.x and later
- Safari 3.x and later
- Chrome 3.x and later

FILESYSTEM

- Intelligent in-line Compression
- Snapshots and Clones
- Thin Provisioning
- Bit-rot Detection and Correction
- Online Capacity Expansion
- Virtual Block Devices
- ZFS Stripe (RAID 0), ZFS Mirror (RAID 1, RAID 1+0), RAID-Z1 (RAID 5), RAID-Z2 (RAID 6)

REMOTE ADMINISTRATION

- HTTP/HTTPS Web Interface
- Email Alert Configuration
- Remote Syslog Client
- Backup & Restore System Settings and State
- Restore to Factory Default
- Resource Monitor
- Log and Event Collection
- Automatic Online Updates
- SNMP Server/MIB
- IPMI Remote Console and Power Management
- REST API

SUPPORTED OPERATING SYSTEMS

- Microsoft Windows XP, Vista (32/64-bit), 7 (32/64-bit), 8/8.1, Server 2003/2008 R2/2012 R2
- Macintosh OS X (all versions)
- Linux
- UNIX
- BSD

BACKUP

- ZFS Remote Replication
- rsync
- Microsoft Windows Backup
- Apple Time Machine
- PC-BSD Life Preserver

